

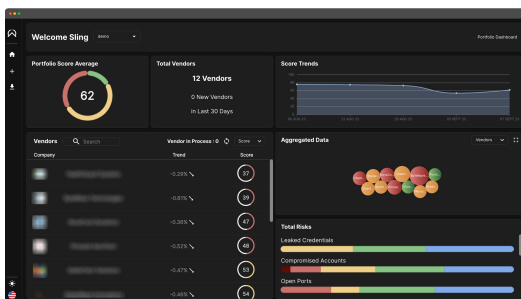
Third-party cyber risk resolved!

Sling revolutionizes third-party cyber risk management by offering unparalleled real-time visibility and predictive insights into vendor and supply chain risk.

Key Features

-  Provides cyber risk monitoring for third-party entities, subsidiaries, and vendors.
-  Offers specialized cyber risk scoring solutions tailored for governmental supply chains.
-  Automates third-party risk assessments, streamlining the onboarding process.
-  Empowers informed decision-making with real-time risk insights.

Together with Ergoman



Ergoman's and Sling's team of experts can provide a comprehensive cyber risk assessment that empowers decision-makers to fortify against a range of threats that could be imposed by third-parties and provide recommendations for risk remediation. Our solutions help you safeguard your supply chain and put robust risk assessment in place to evaluate and monitor third-party risks continuously.

Ergoman Communication GmbH

+49 (0)7141 49328-0 | Schorndorfer Str. 42, D-71638 Ludwigsburg

www.ergoman.net | sales@ergoman.net

An AI game-changer for security

The Darktrace ActiveAI Security Platform is designed to transform security operations to a proactive state. In an era of increasing AI-augmented threats, the platform gives security teams more complete visibility across the digital environment, illuminates security gaps, and frees up time to focus on building cyber resilience.

Key Features



ActiveAI Security Platform: Darktrace's platform uses machine learning to detect anomalies across your network, cloud, and IoT environments. It delivers a proactive approach to cyber resilience in a single cybersecurity platform, providing preemptive visibility into security posture, real-time detection, and autonomous response to known and unknown threats.

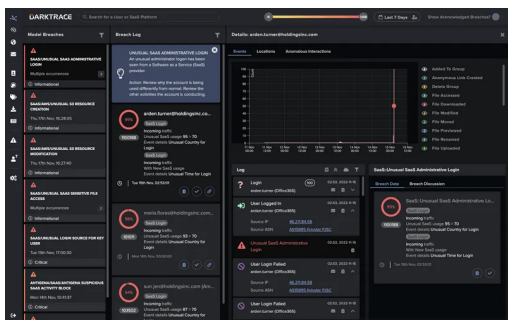


Autonomous Response: Darktrace's AI can take real-time actions to neutralize threats, preventing potential damage.



Threat Visualizer: Darktrace provides a visual representation of your network, making it easier to identify and investigate security incidents.

Together with Ergoman



As a long-standing partner, Ergoman advises companies on how to significantly enhance their cybersecurity with Darktrace and greatly relieve their IT teams. Our consultants assist organizations in selecting the most appropriate Darktrace modules to be protected from advanced cyber threats, including insider attacks, zero-day vulnerabilities and sophisticated malware. With Ergoman and Darktrace, you can rest assured that your enterprise is protected by cutting-edge cybersecurity technology.

Ergoman Communication GmbH

+49 (0)7141 49328-0 | Schorndorfer Str. 42, D-71638 Ludwigsburg

www.ergoman.net | sales@ergoman.net